

# SWE-MED COI API Downloader

USER MANUAL


# Introduction

---

Welcome to the SWE-MED COI API Downloader!

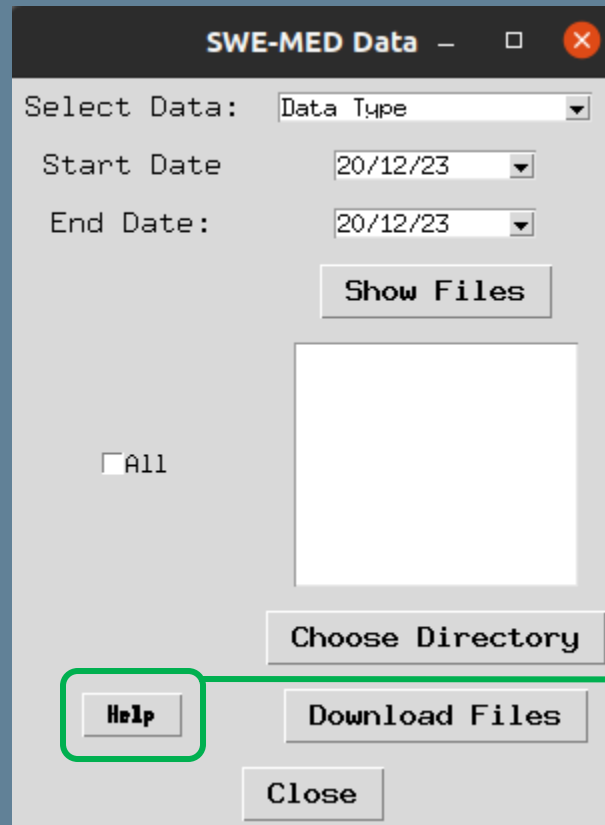


This API is designed to facilitate the retrieval of data files from the COI observatory.



This manual will guide you through the process of using this API effectively.

# Getting Started



SWE-MED Data

Select Data: Data Type

Start Date: 20/12/23

End Date: 20/12/23

Show Files

☐ All

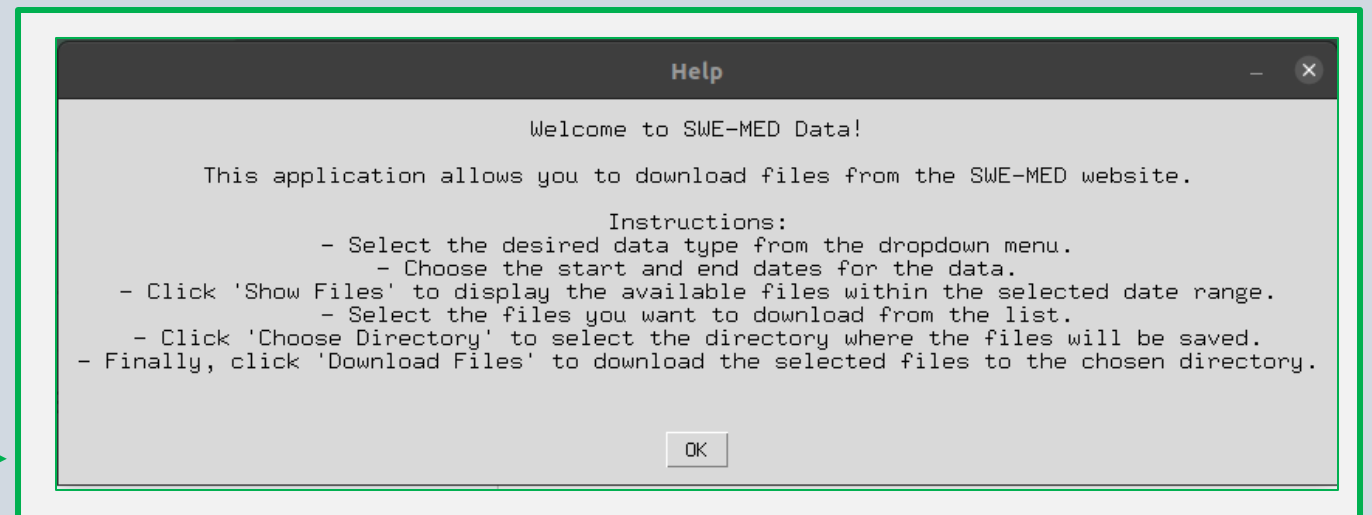
Choose Directory

Download Files

Close

Help

Click **Help** to see the instructions on how use this API to download Data from the COI observatory.



Help

Welcome to SWE-MED Data!

This application allows you to download files from the SWE-MED website.

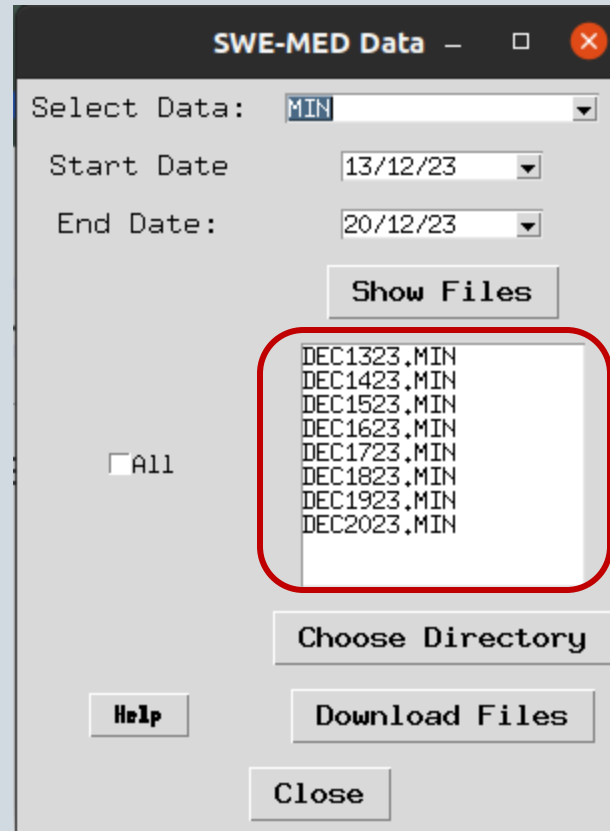
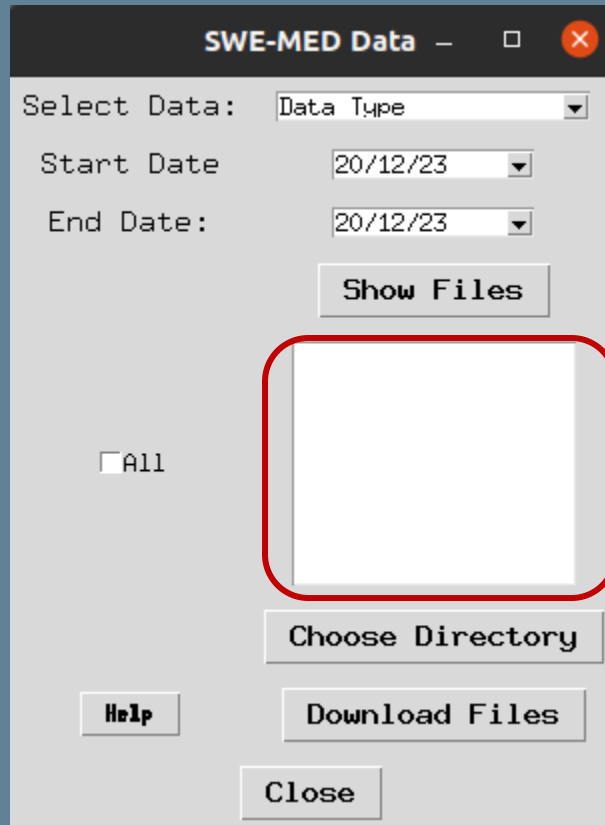
Instructions:

- Select the desired data type from the dropdown menu.
- Choose the start and end dates for the data.
- Click 'Show Files' to display the available files within the selected date range.
- Select the files you want to download from the list.
- Click 'Choose Directory' to select the directory where the files will be saved.
- Finally, click 'Download Files' to download the selected files to the chosen directory.

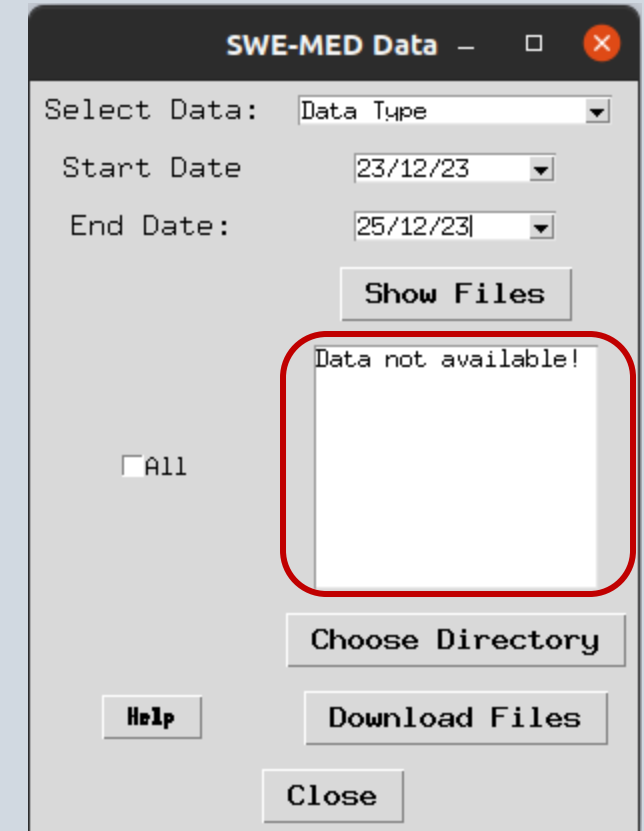
OK

# Getting Started

After choosing the data type and the dates, when clicking **Show Files** there are two possible outcomes:



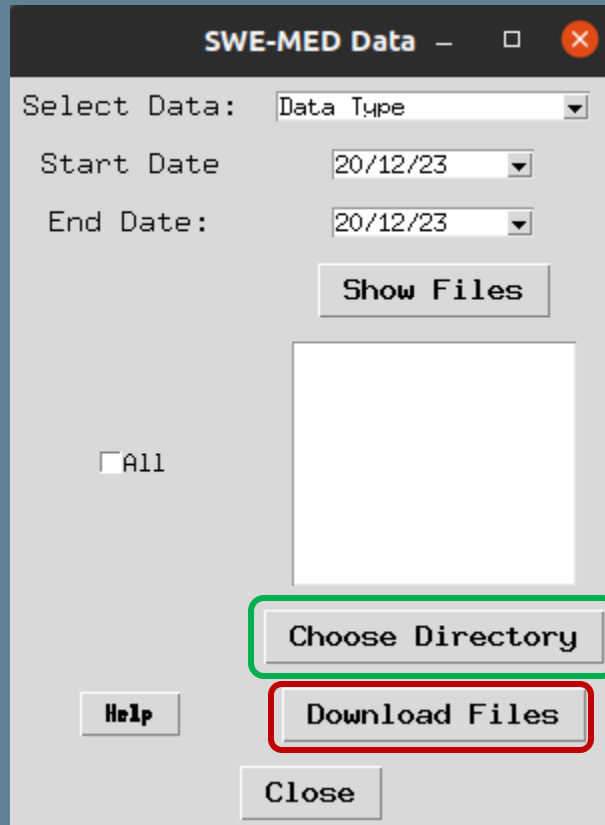
Or



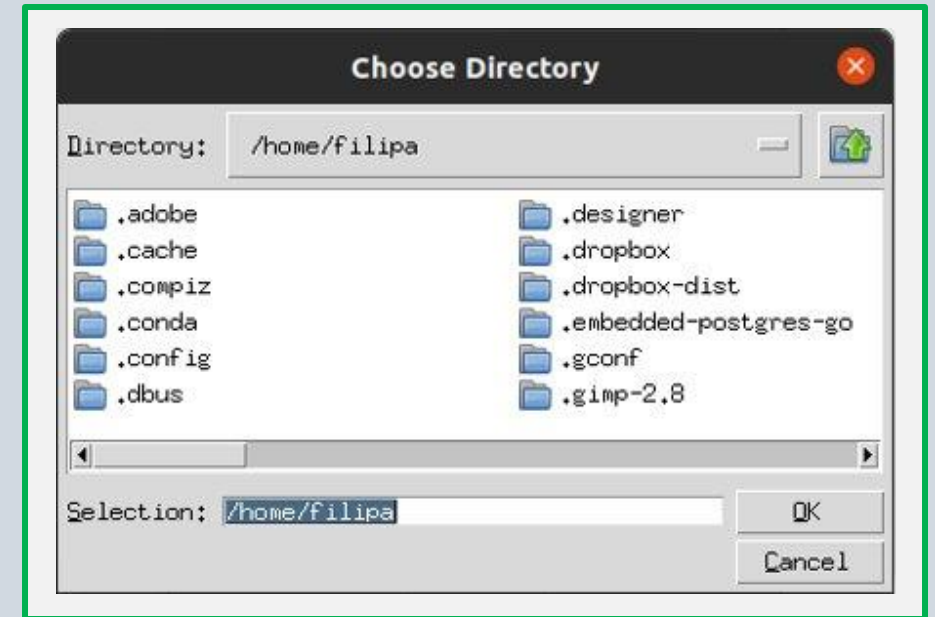
A file list.

An Error message either because the data type was not selected or because there are no files available for the dates selected.

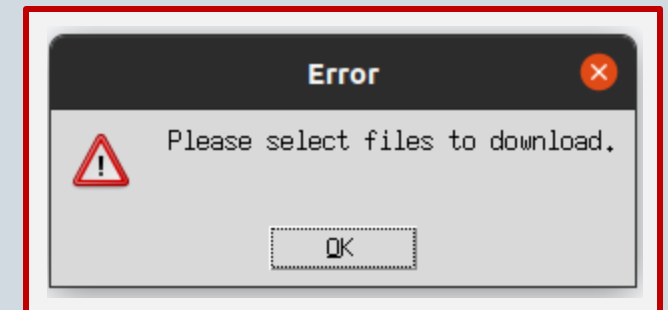
# Getting Started



**Choose Directory** button will open a window where you can choose where to save the downloaded files:



**Download Files** will prompt an error message when clicked without any file selected:



Thank you for using the  
SWE-MED COI Data  
Downloader API!